

# COVID-19 STAFF PROTOCOLS FOR RESIDENTIAL SETTINGS



## STAFF PROTOCOLS

The following guide provides step by step instructions for frontline staff working in residential settings to perform in the cases of suspected exposure, presumptive or confirmed cases of COVID-19.

Please review the steps thoroughly and should there be any questions at any time, please reach out to Lead Hands or Management for clarification, prior to supporting an Individual whom is presumed or confirmed to have the virus.

### Donning and Doffing Personal Protective Equipment

Protocols are to be followed in order to ensure you follow the correct sequence for wearing personal protective equipment. Please review the video link below and again, should you have any questions please reach out to Lead Hands or Management for clarification.

<https://www.publichealthontario.ca/en/videos/ipac-fullppe-off>

**Additional Instructions (Self Isolation, Self Isolation for Caregivers, Hand Washing, Masks, Cleaning and Disinfecting, Self Monitoring)**

<https://www.publichealthontario.ca/en/diseases-and-conditions/infectious-diseases/respiratory-diseases/novel-coronavirus/public-resources>

**On Call Manager Phone – 613.621.6959**

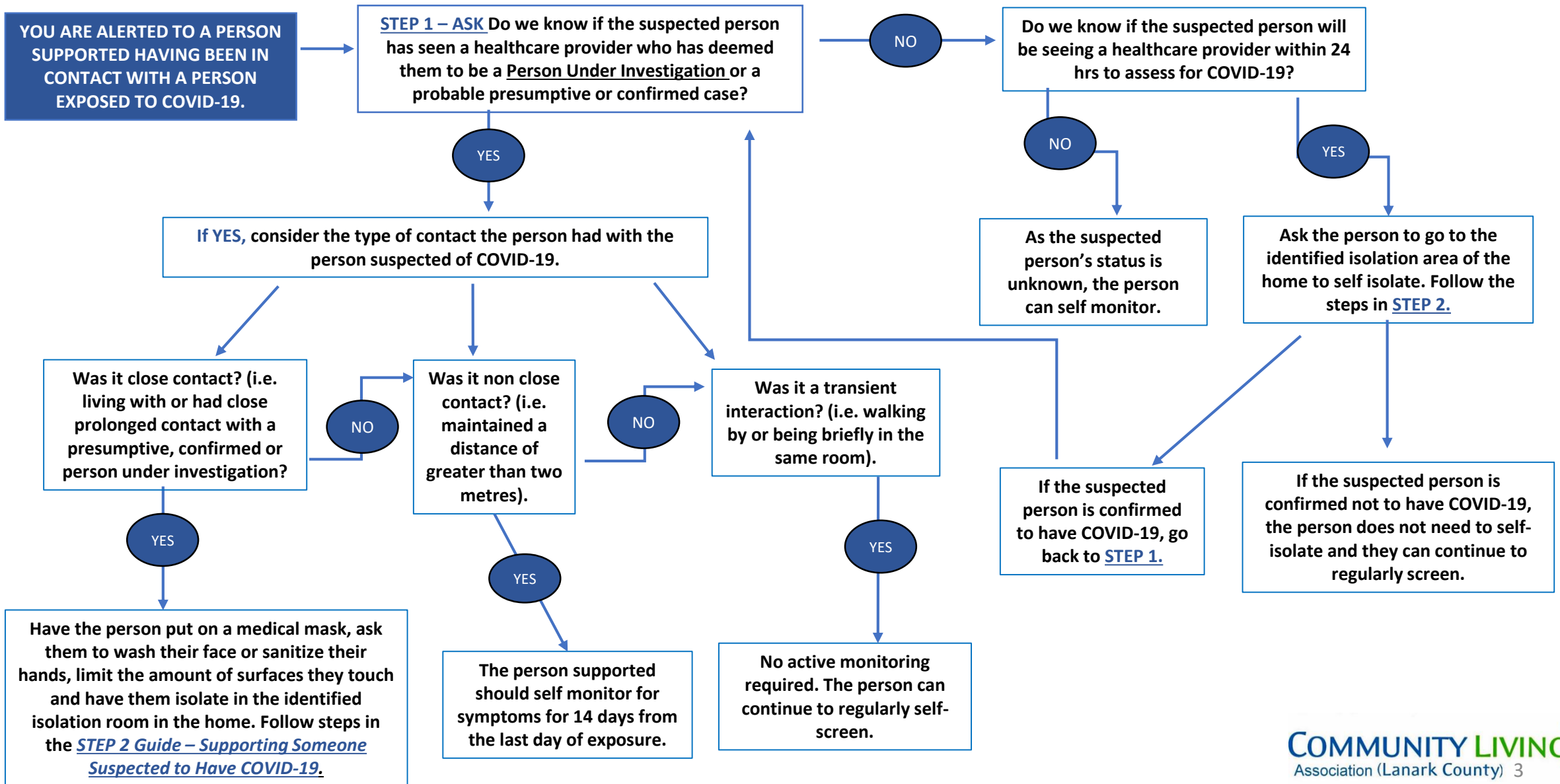
**Public Health Unit –1.800.660.5853 x24**

**99leheath – 1.866.797.0000**



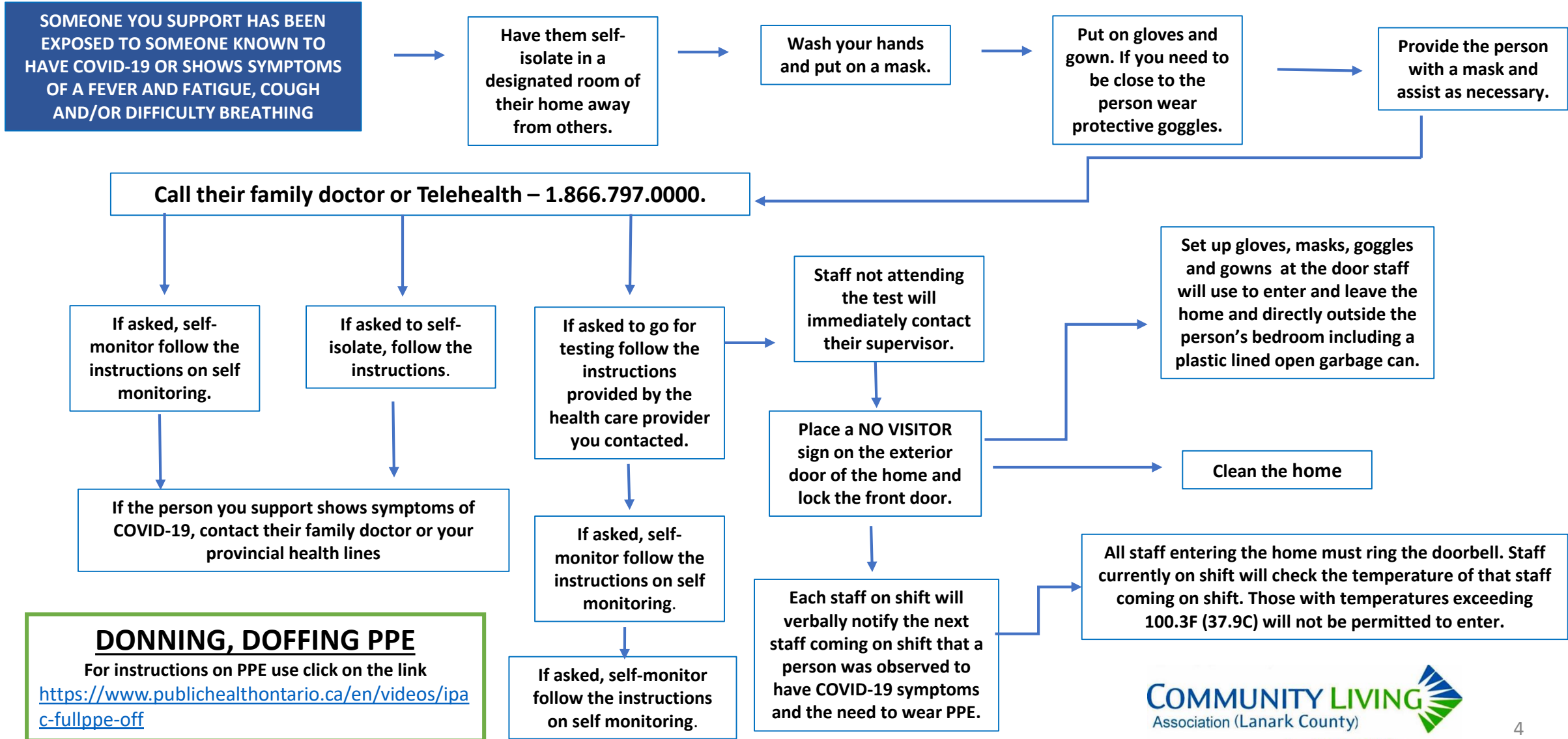
# STEP 1

## GUIDANCE ON COVID-19 EXPOSURE SCENARIOS IN RESIDENTIAL SETTINGS



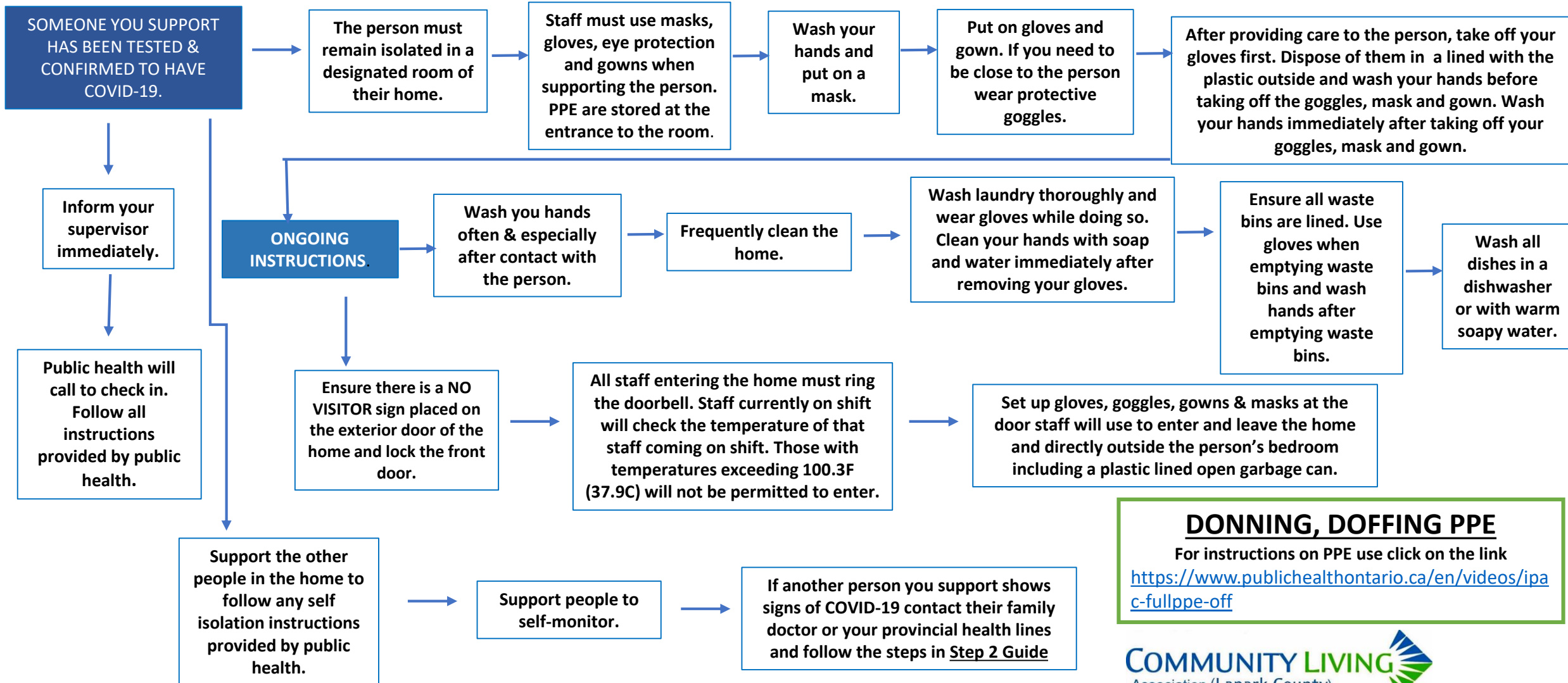
# STEP 2

## GUIDANCE ON SUPPORTING SOMEONE SUSPECTED TO HAVE COVID-19 IN RESIDENTIAL SETTINGS



# STEP 3

## GUIDANCE ON SUPPORTING SOMEONE WHO HAS COVID-19 IN RESIDENTIAL SETTINGS



### DONNING, DOFFING PPE

For instructions on PPE use click on the link

<https://www.publichealthontario.ca/en/videos/ipa-c-fullppe-off>